

SENATA



KEY FEATURES

- > 215-220 sqm home, 450 sqm section
- > Separate accommodation
- > White brick, white board and batten
- > Designer kitchen and scullery
- > 4 Bedrooms, 3 Bathrooms
- > Outdoor alfresco



Te Okuroa Drive, Palm Springs



07 578 5099

Starting From

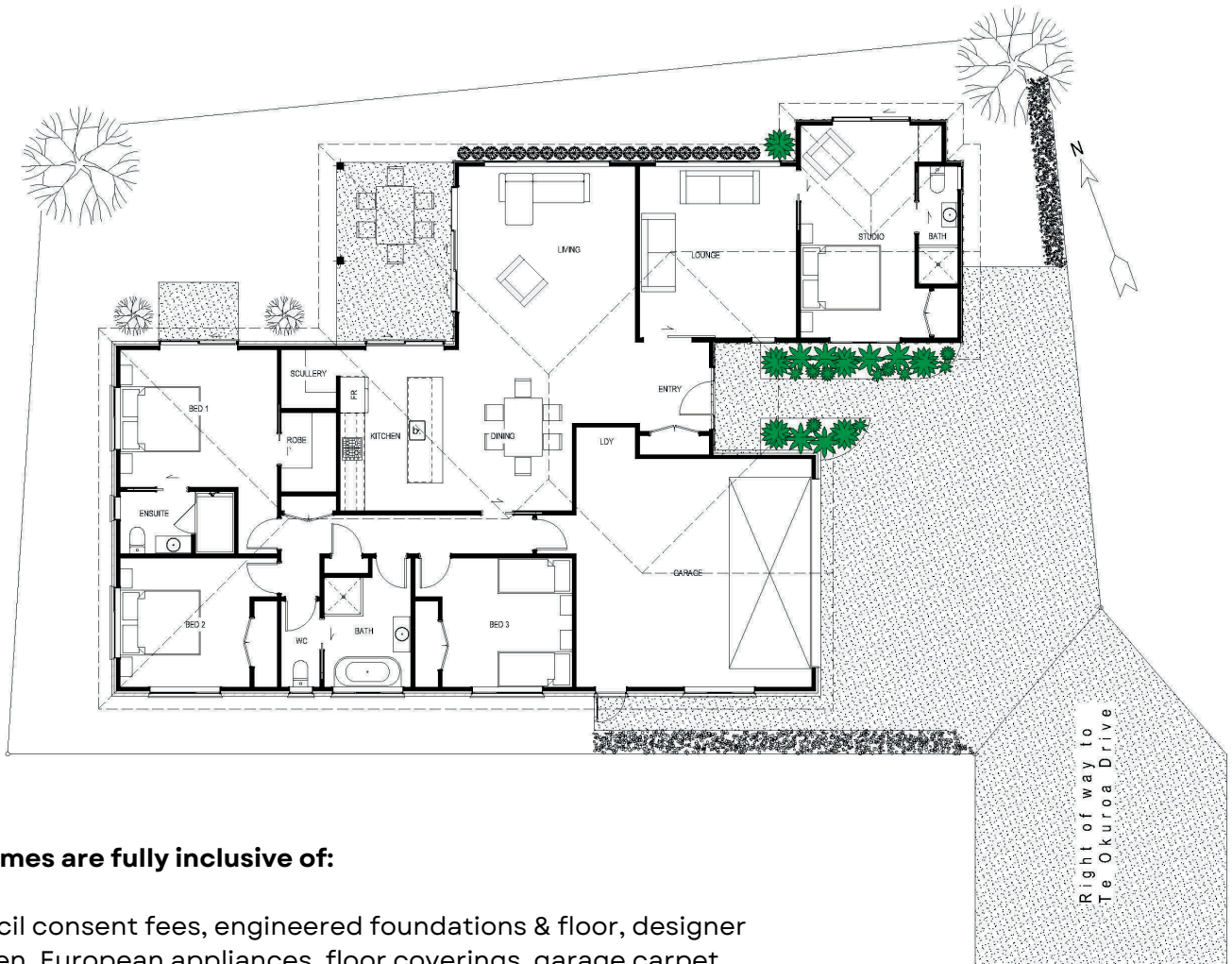
> **\$1,375,000**



info@genxhomes.co.nz



www.genxhomes.co.nz



All homes are fully inclusive of:

Council consent fees, engineered foundations & floor, designer Kitchen, European appliances, floor coverings, garage carpet, heating TBC, driveway, path and timber decking, fencing, lawn, 10-yr Master Build guarantee, fully completed and ready to move in!

- > 4 bedrooms
- > 3 living
- > 3 bathrooms
- > 2 car garage

COPYRIGHT: This design remains property of GenX Homes BOP Ltd. No reproduction or modification of this design is to occur without written authorisation.

